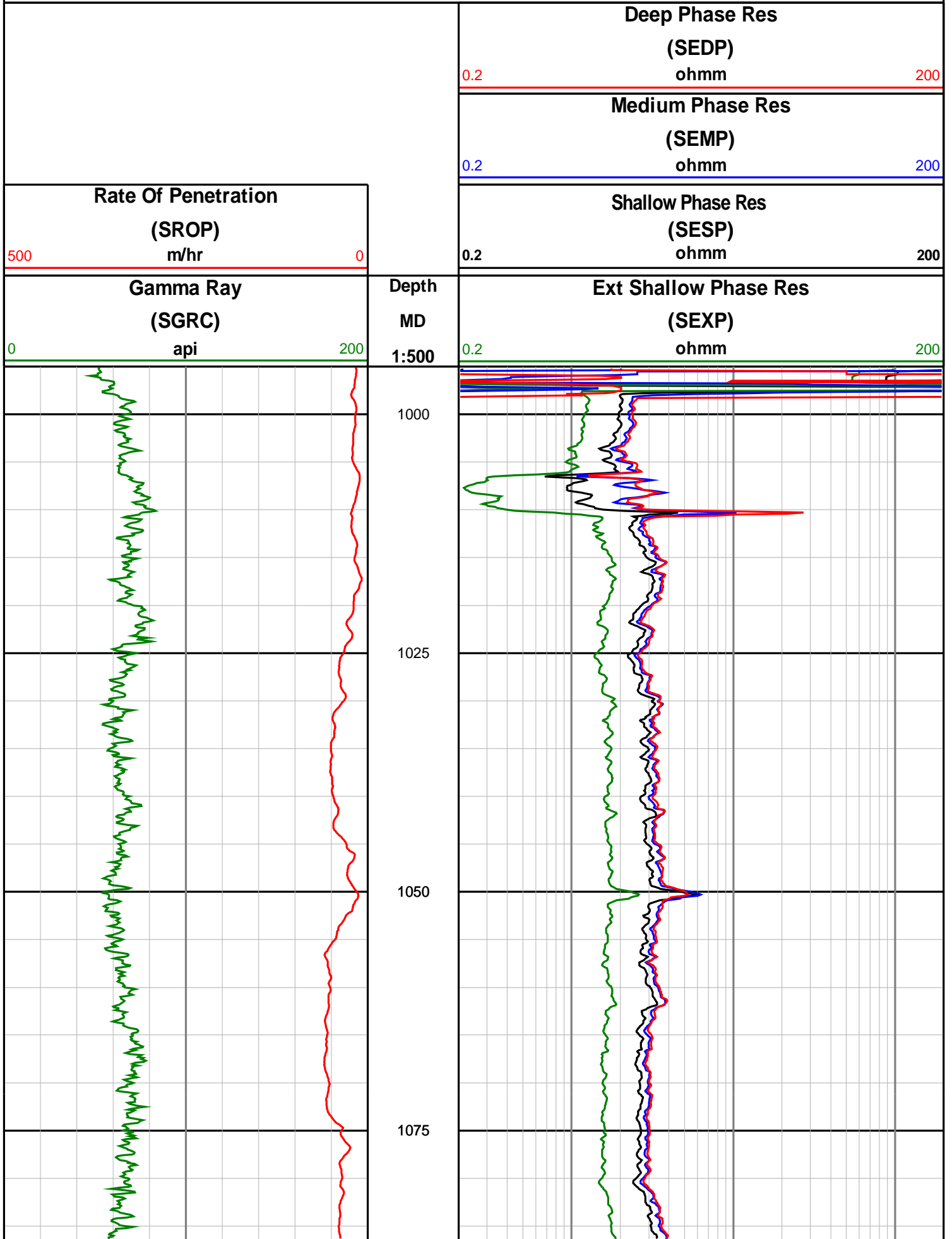
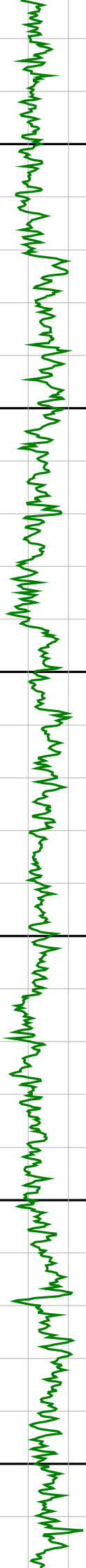


Anzon Australia Ltd

Basker-4

Realtime LWD Log (Permanent Datum - LAT)





1100

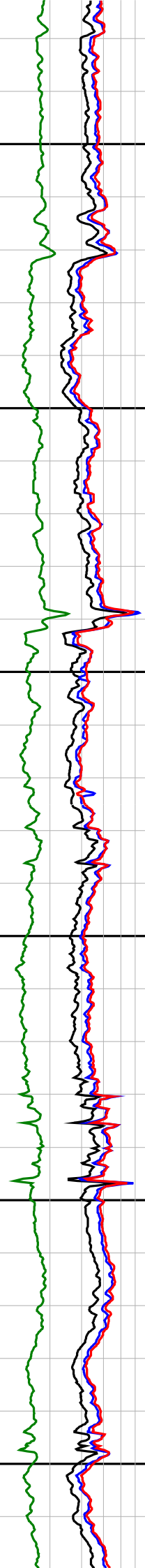
1125

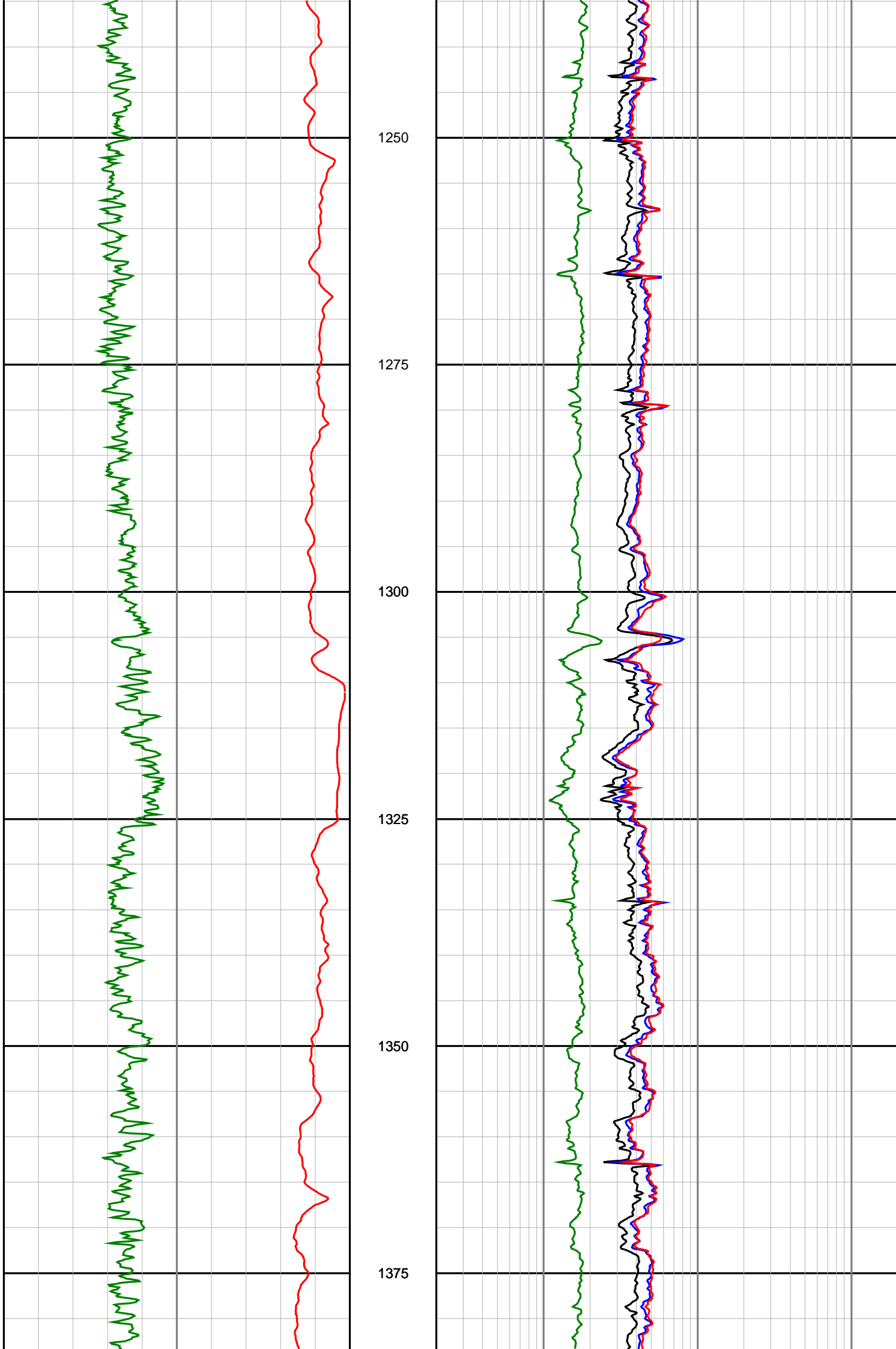
1150

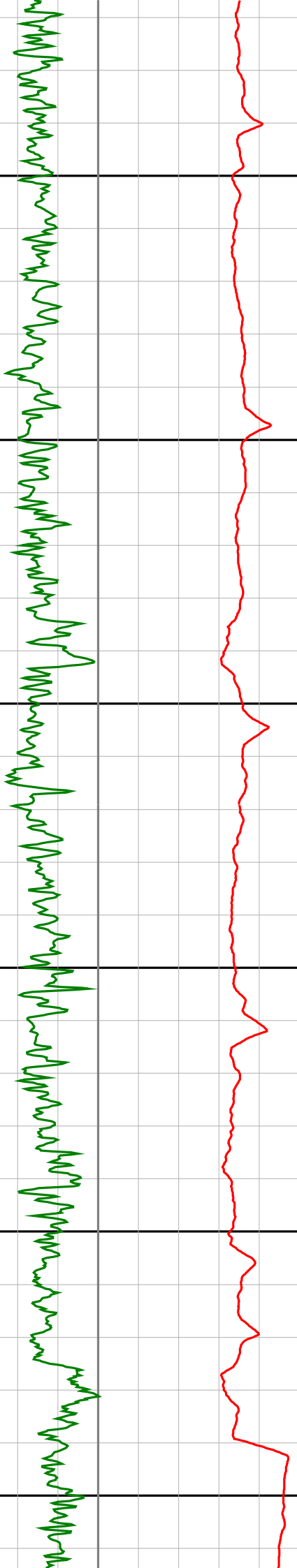
1175

1200

1225







1400

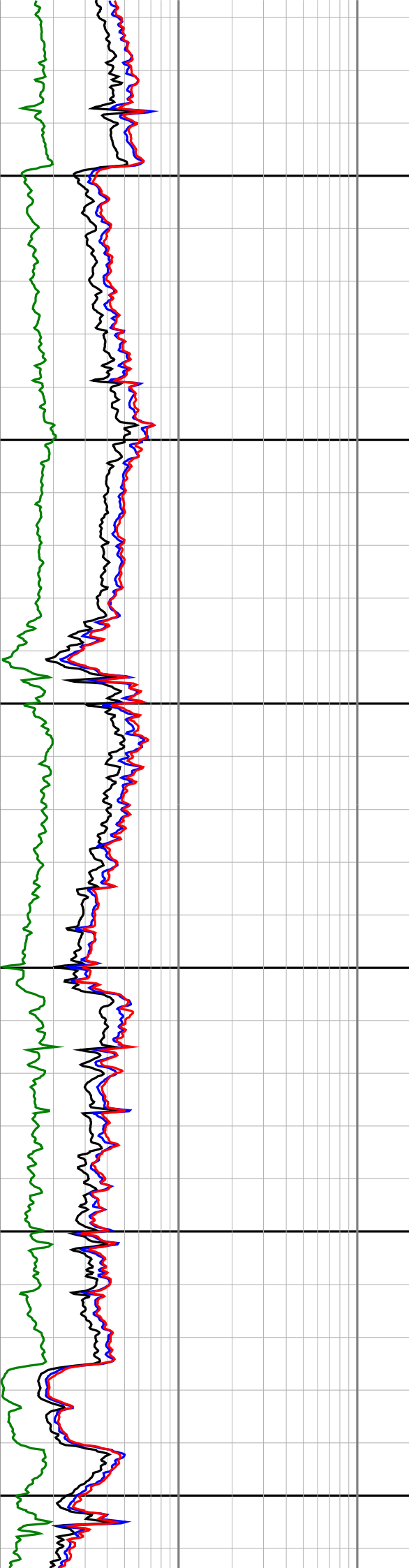
1425

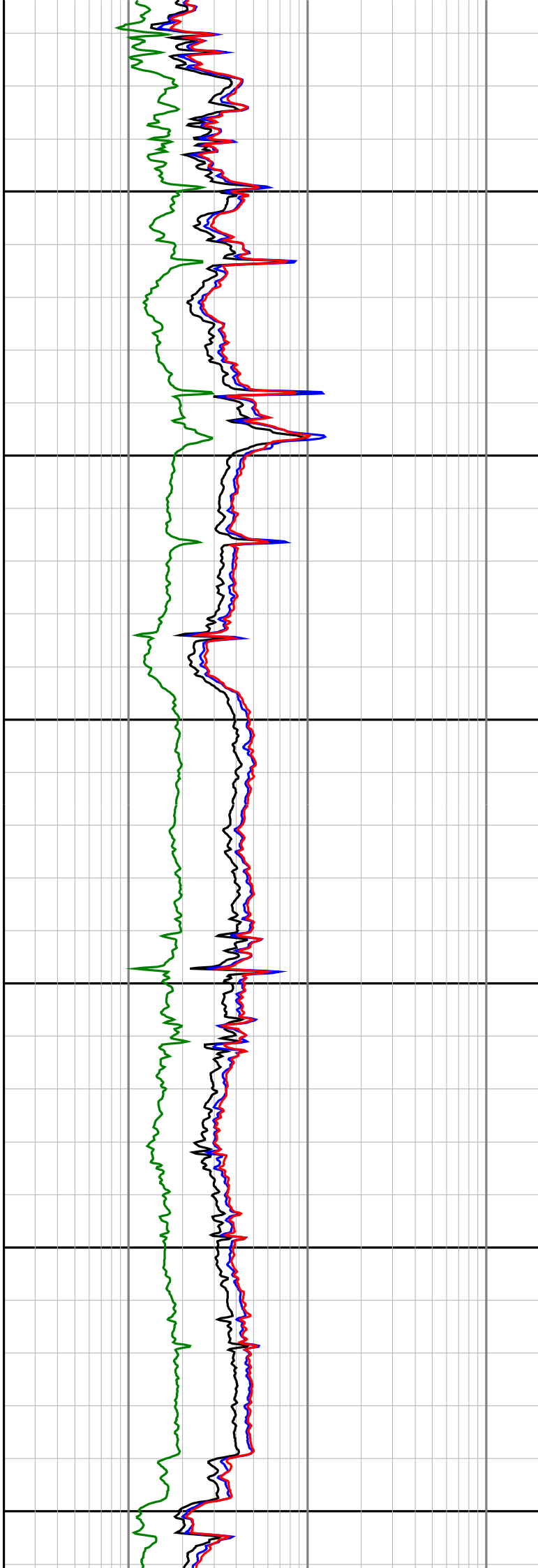
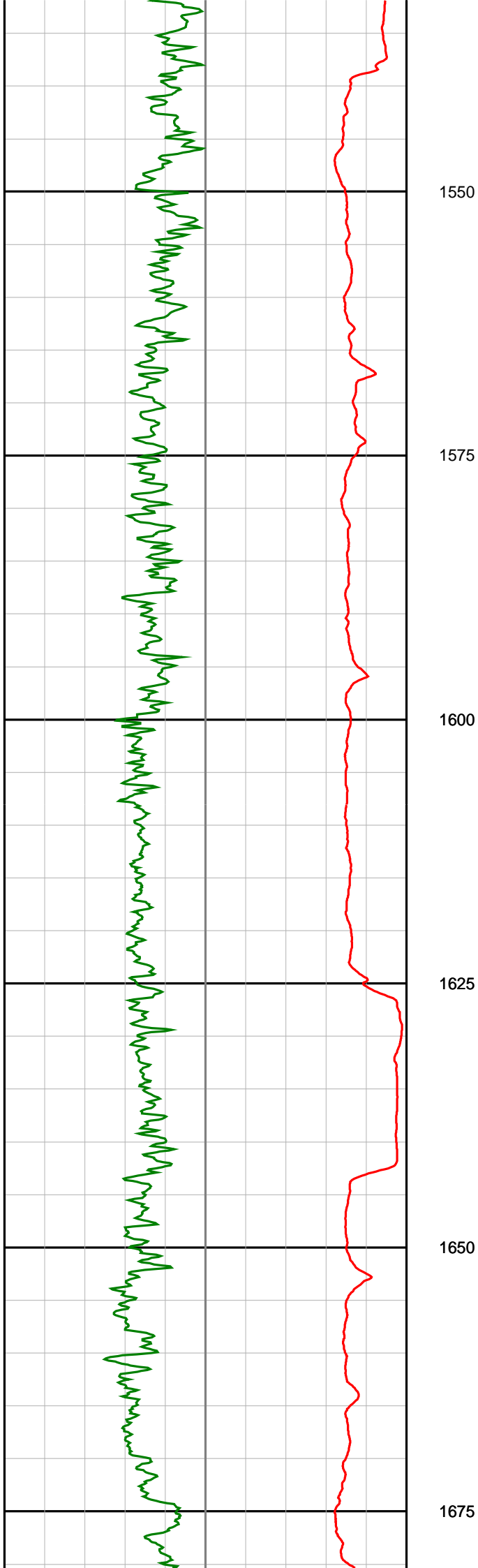
1450

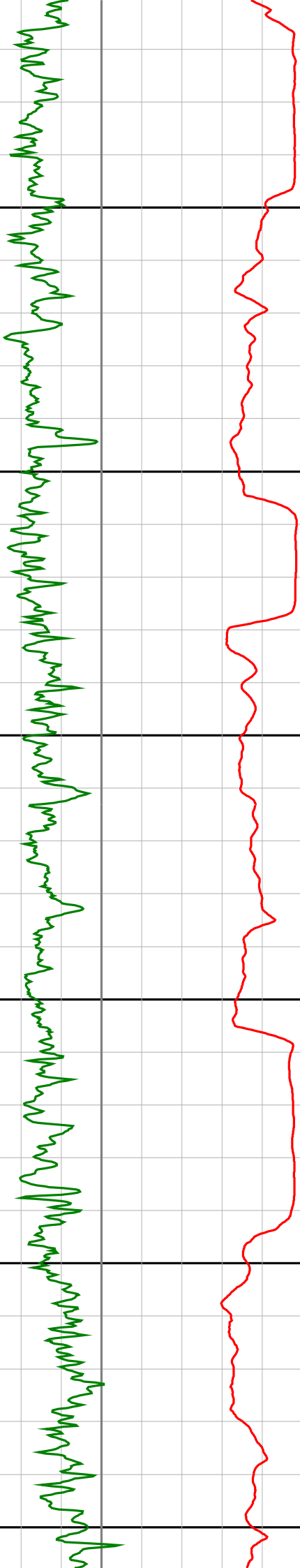
1475

1500

1525







1700

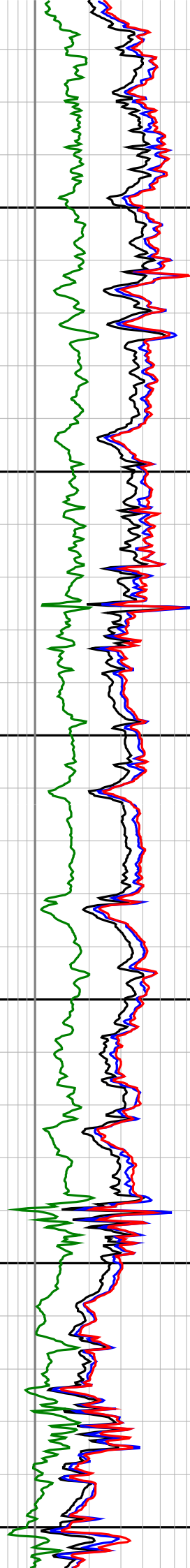
1725

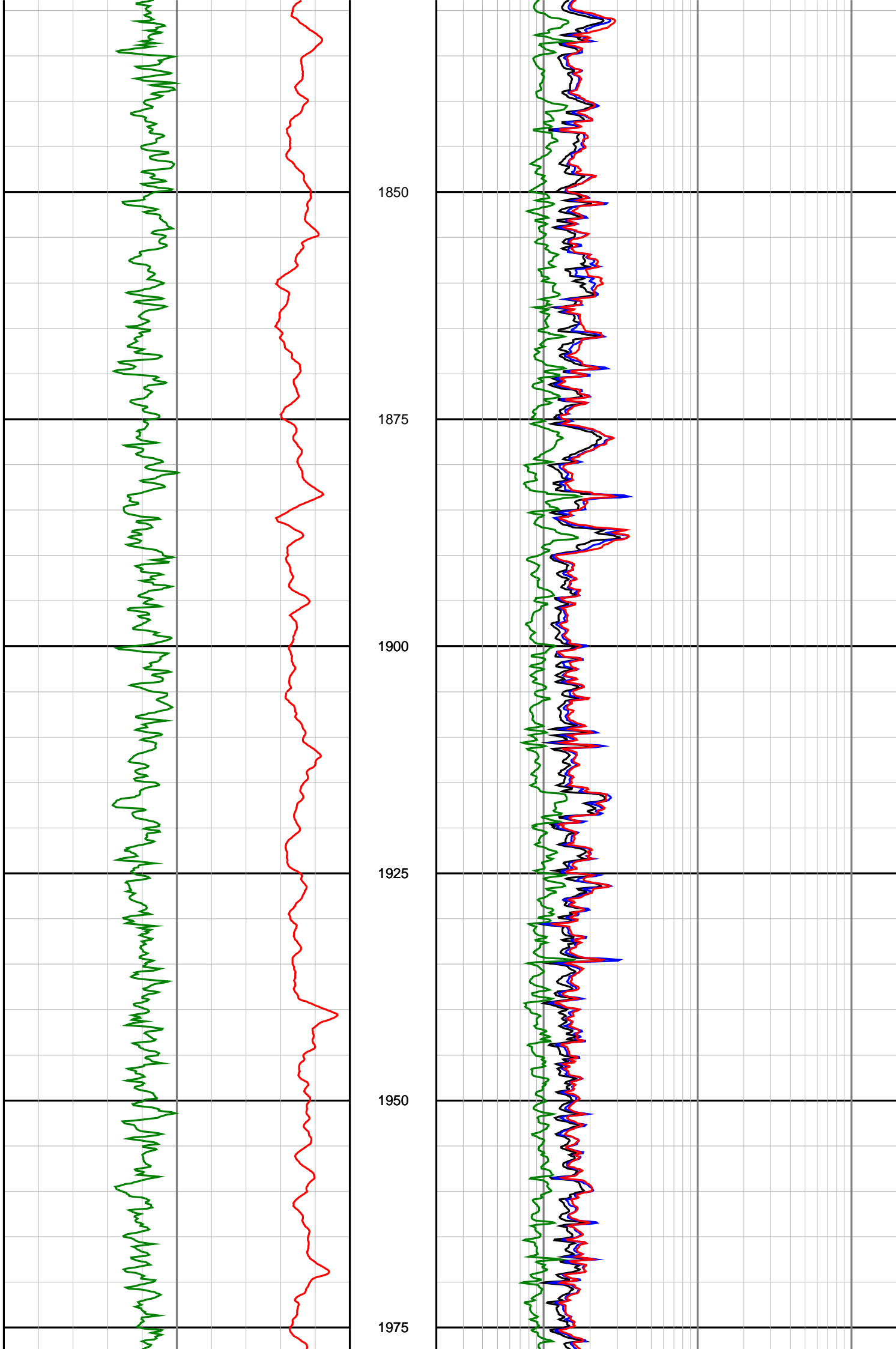
1750

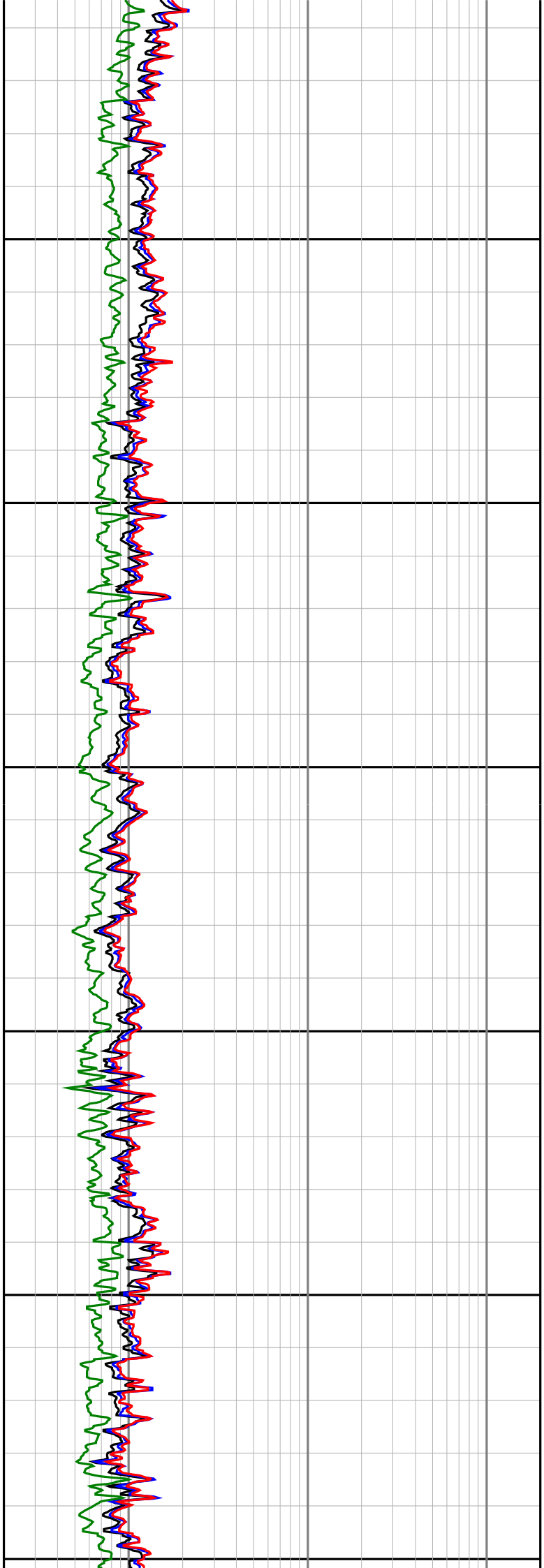
1775

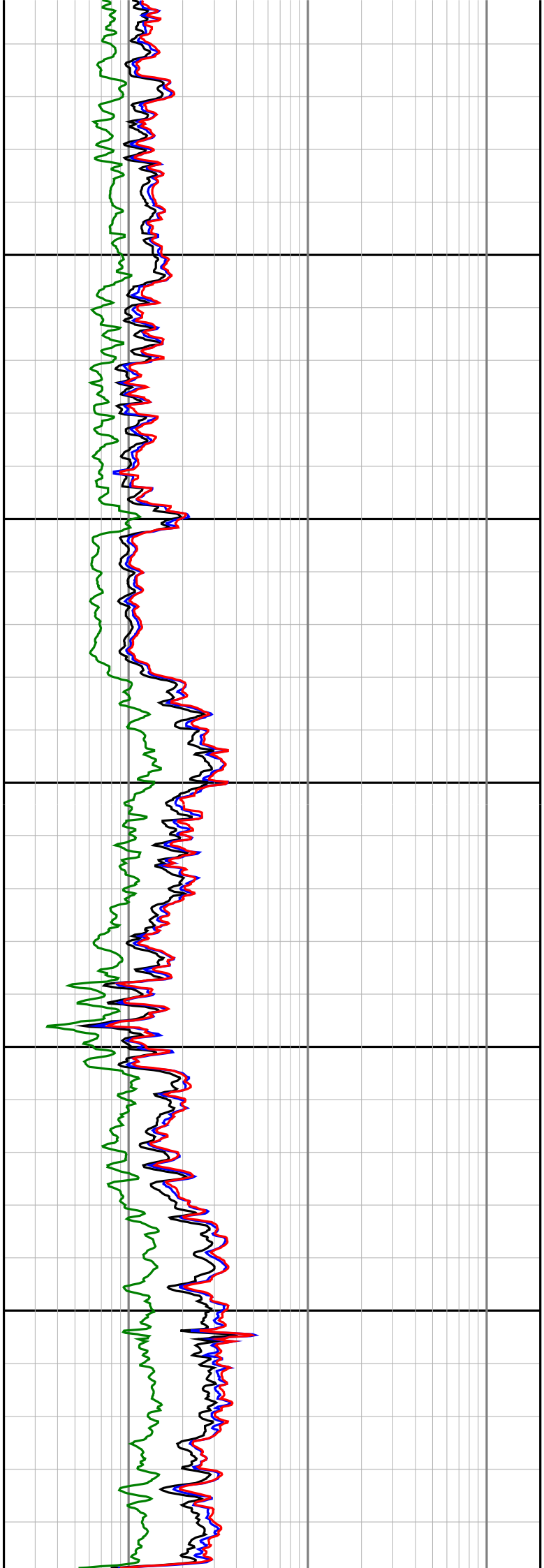
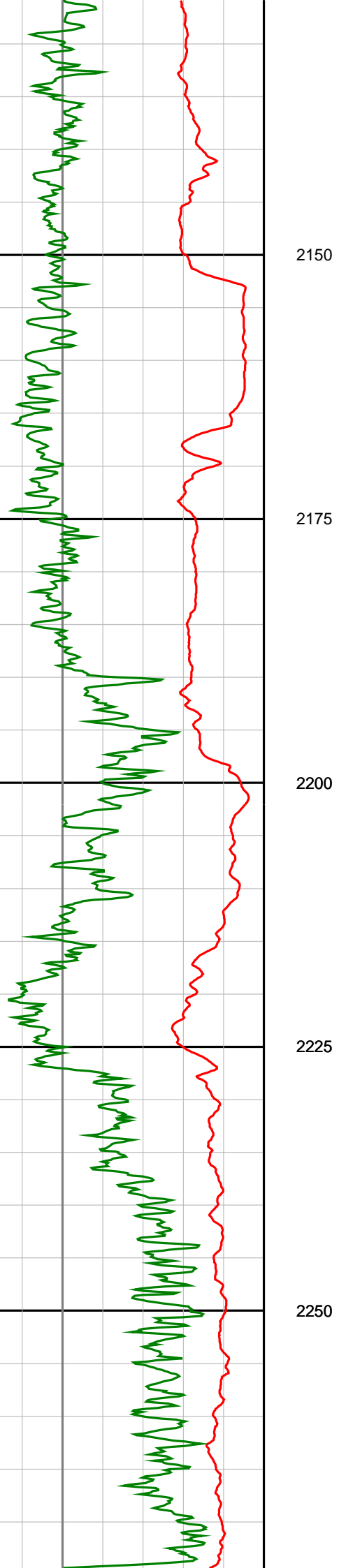
1800

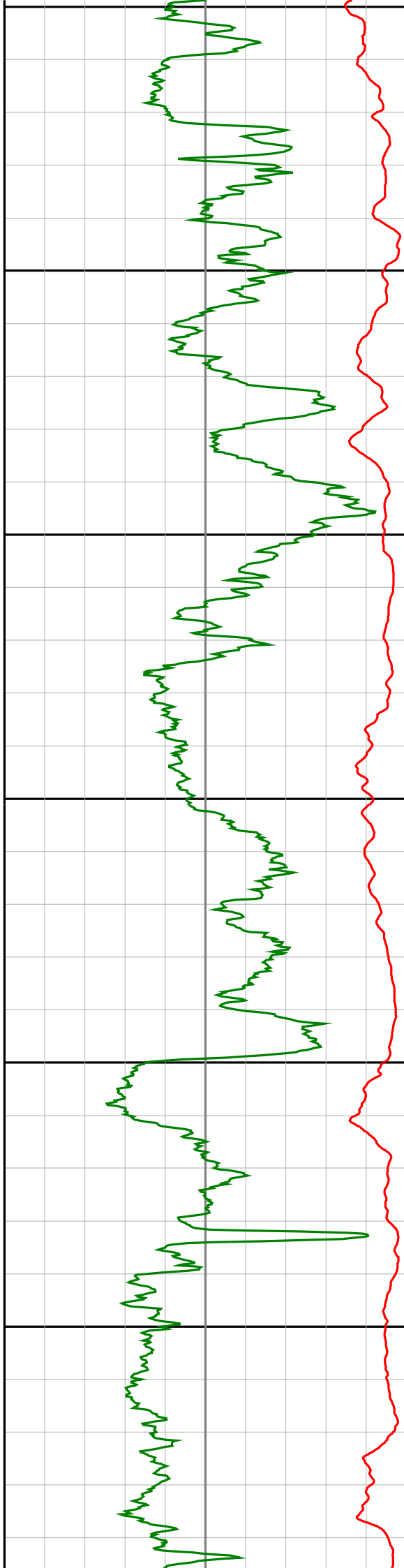
1825











2275

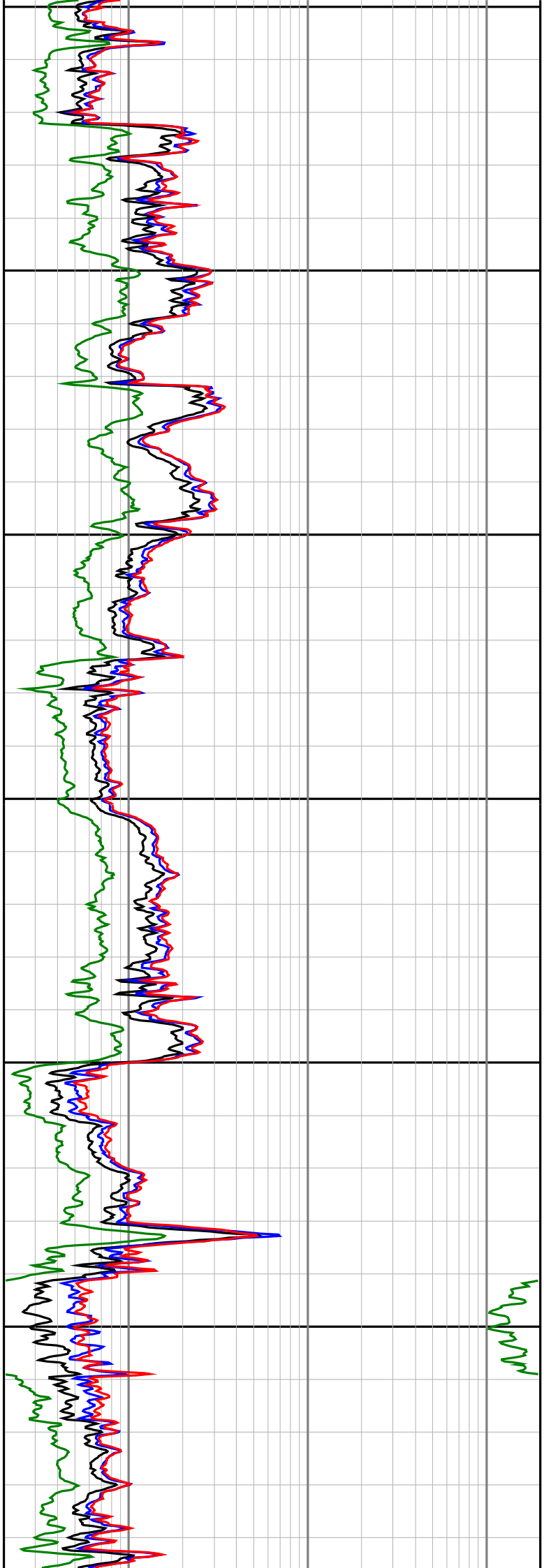
2300

2325

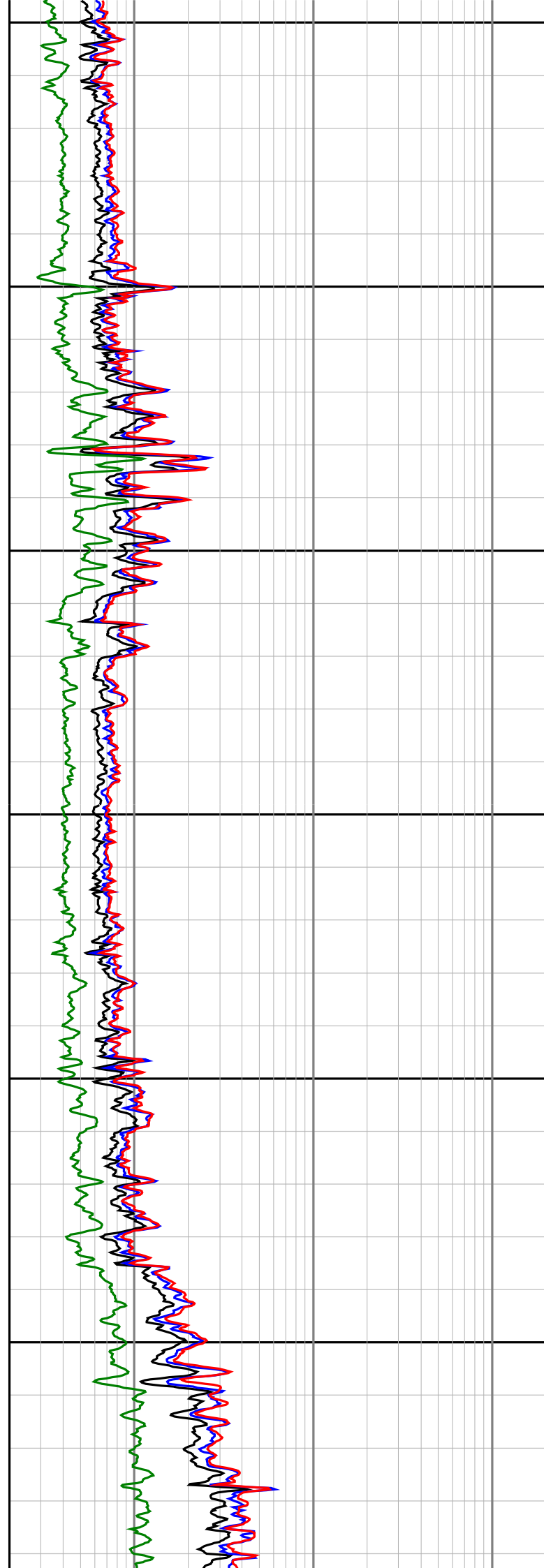
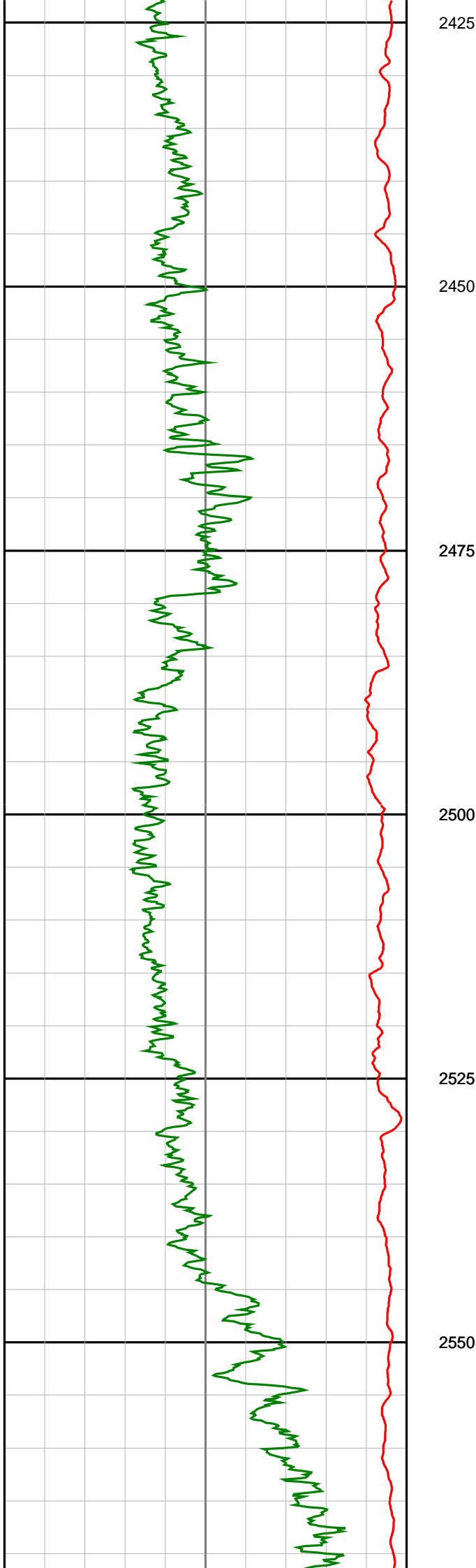
2350

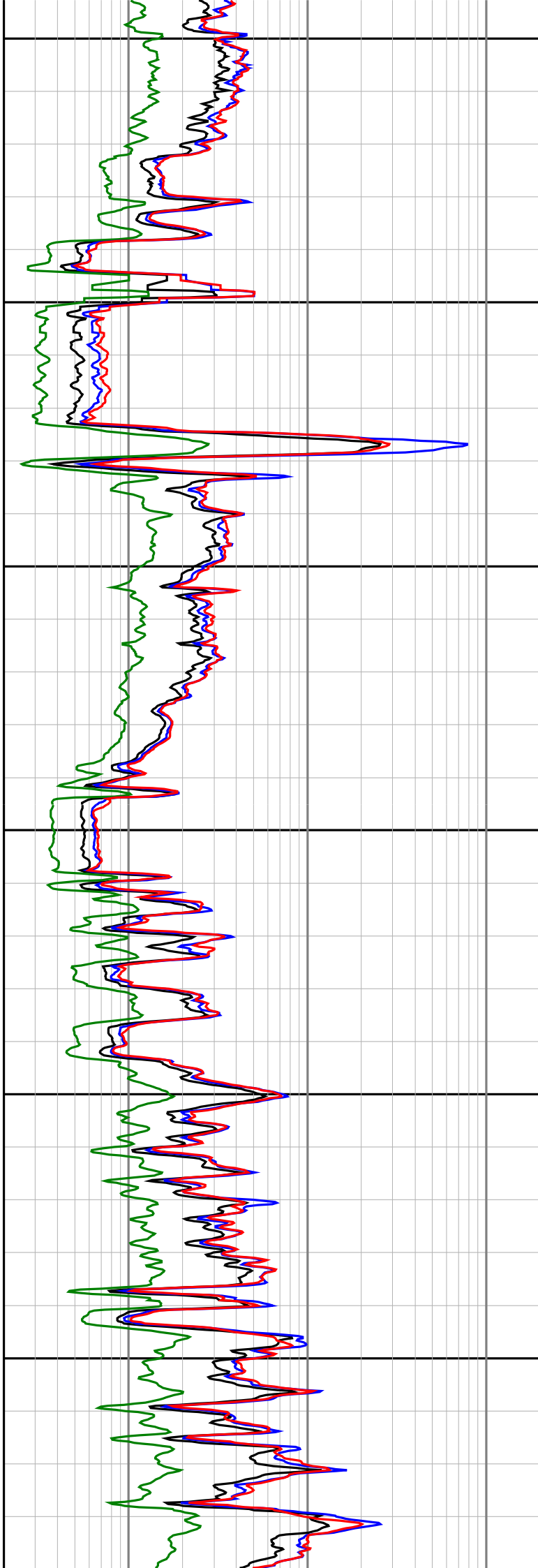
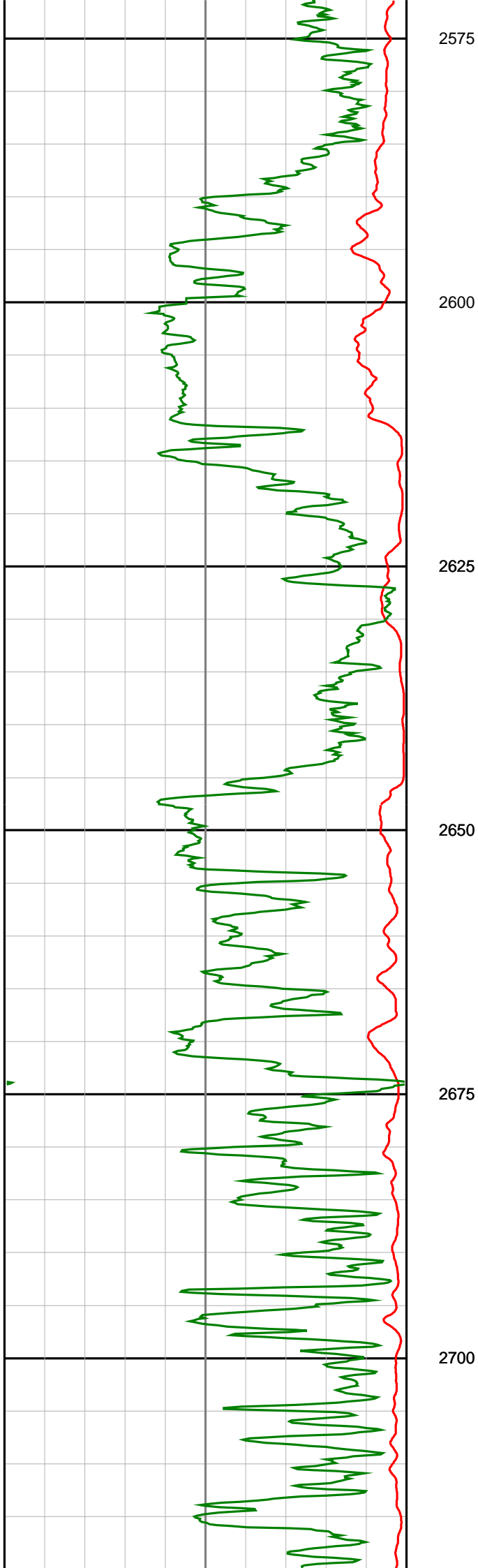
2375

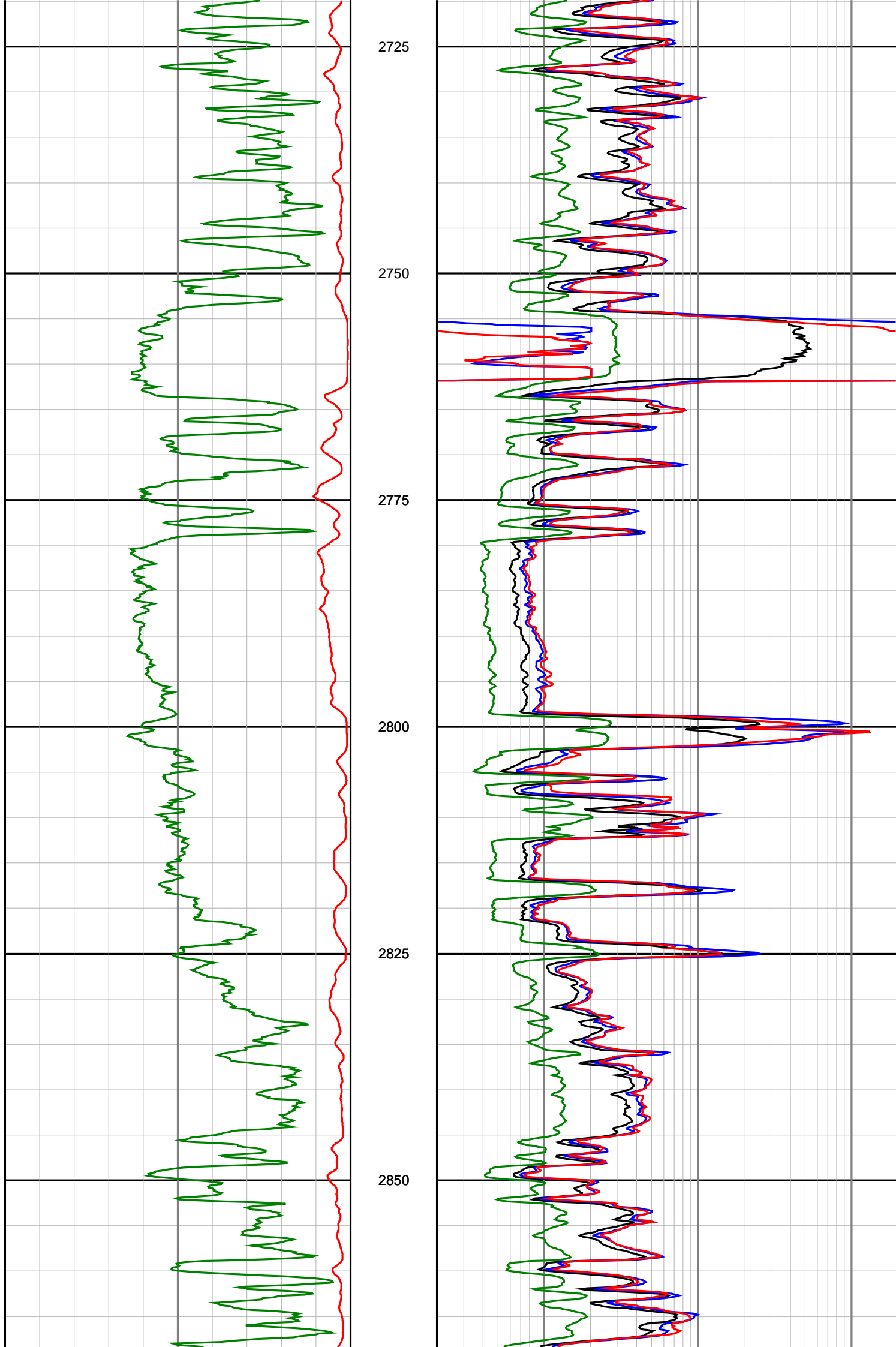
2400

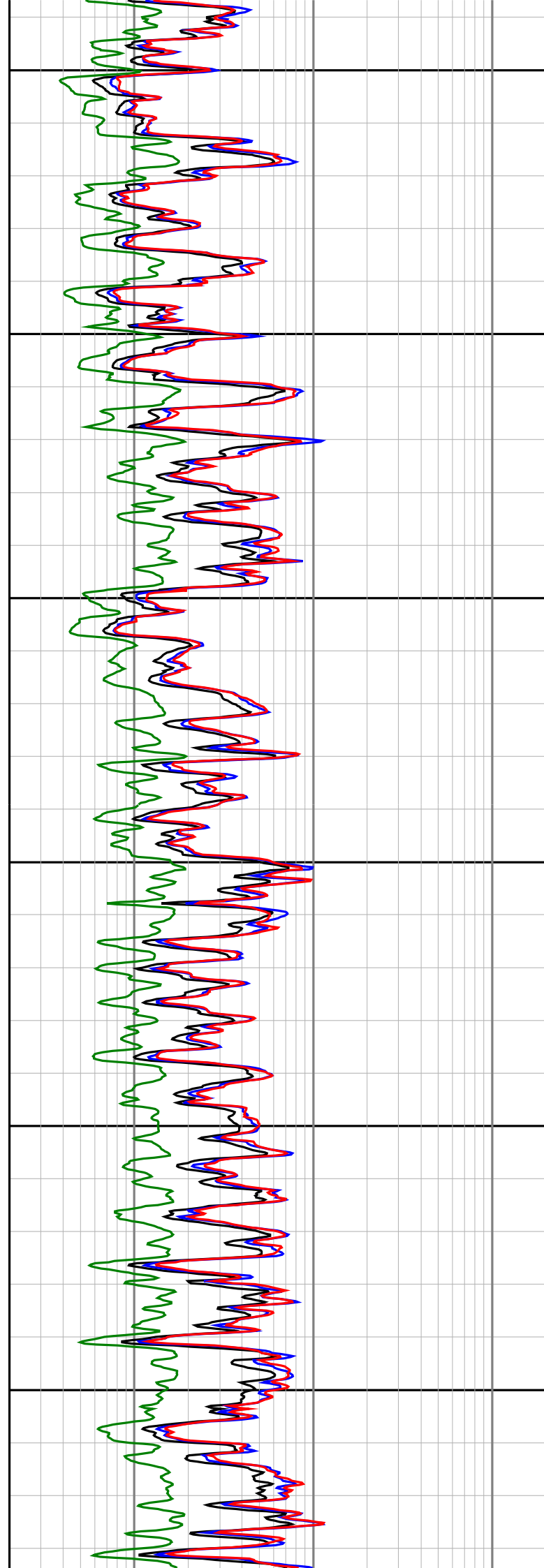
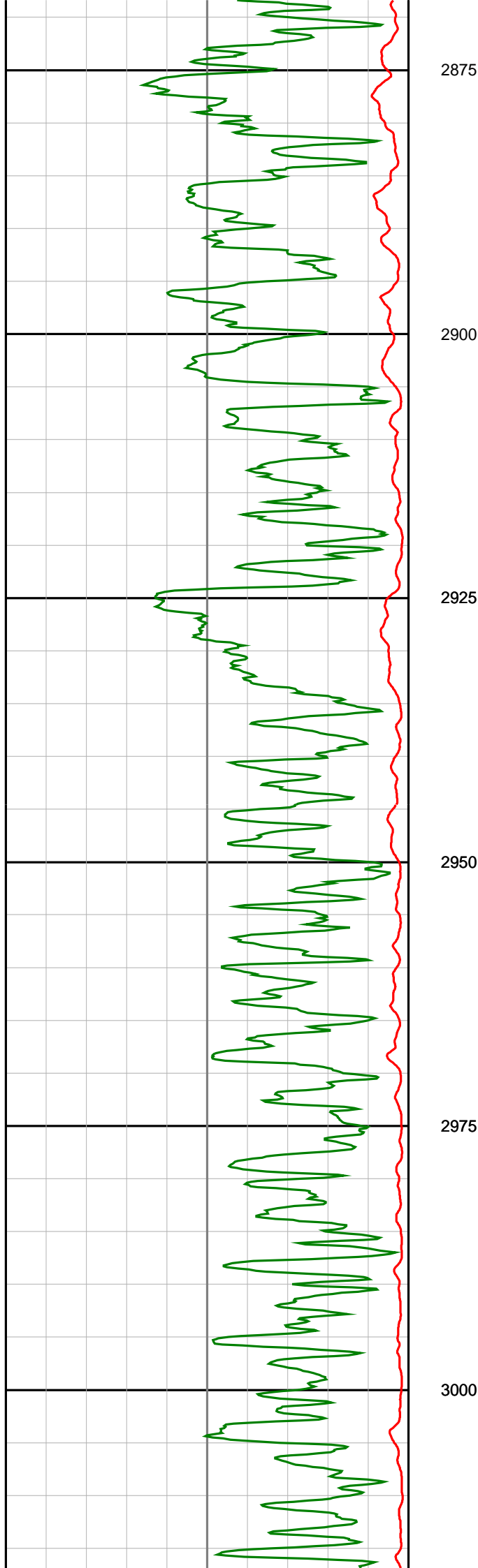


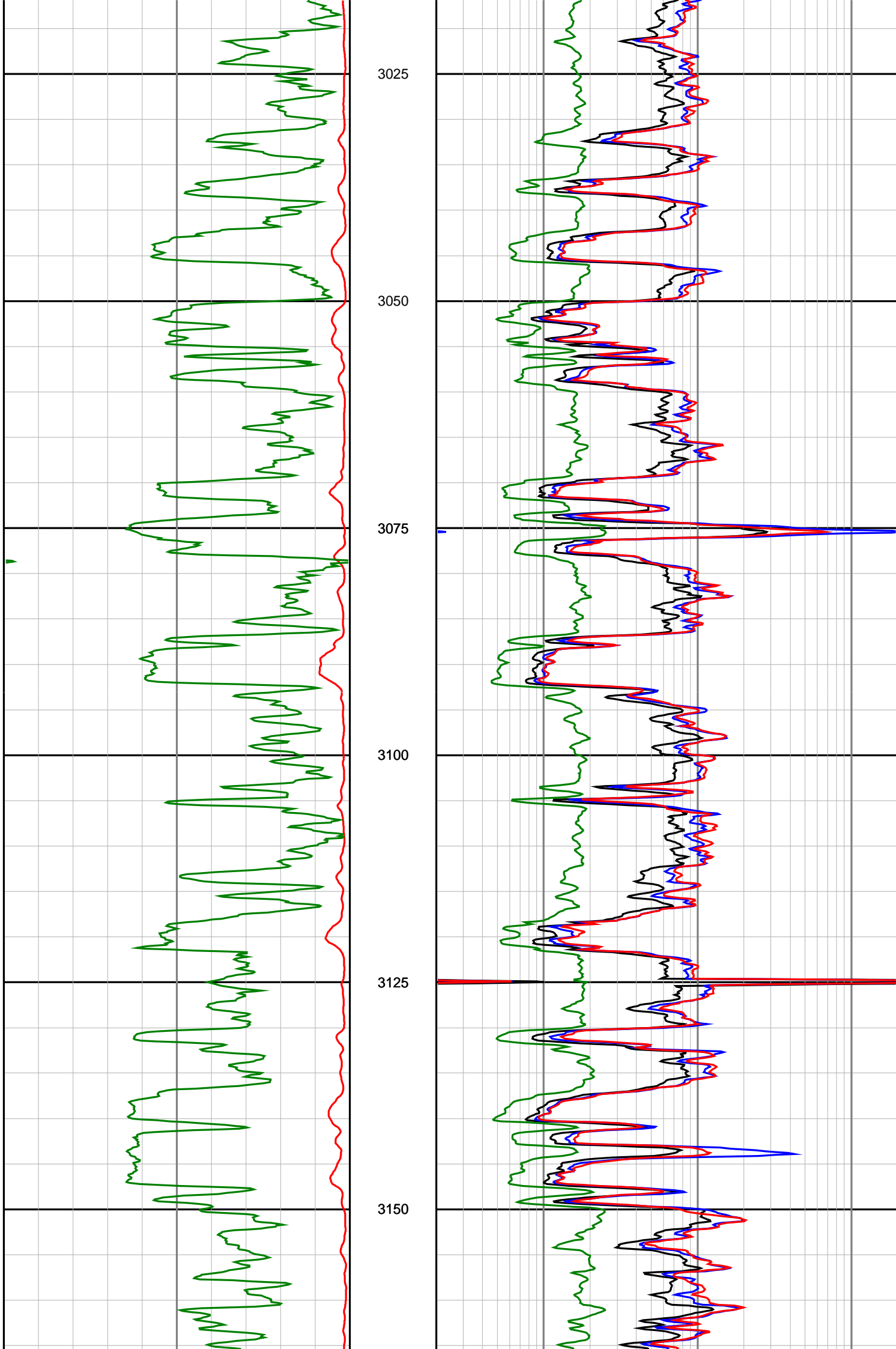
2400

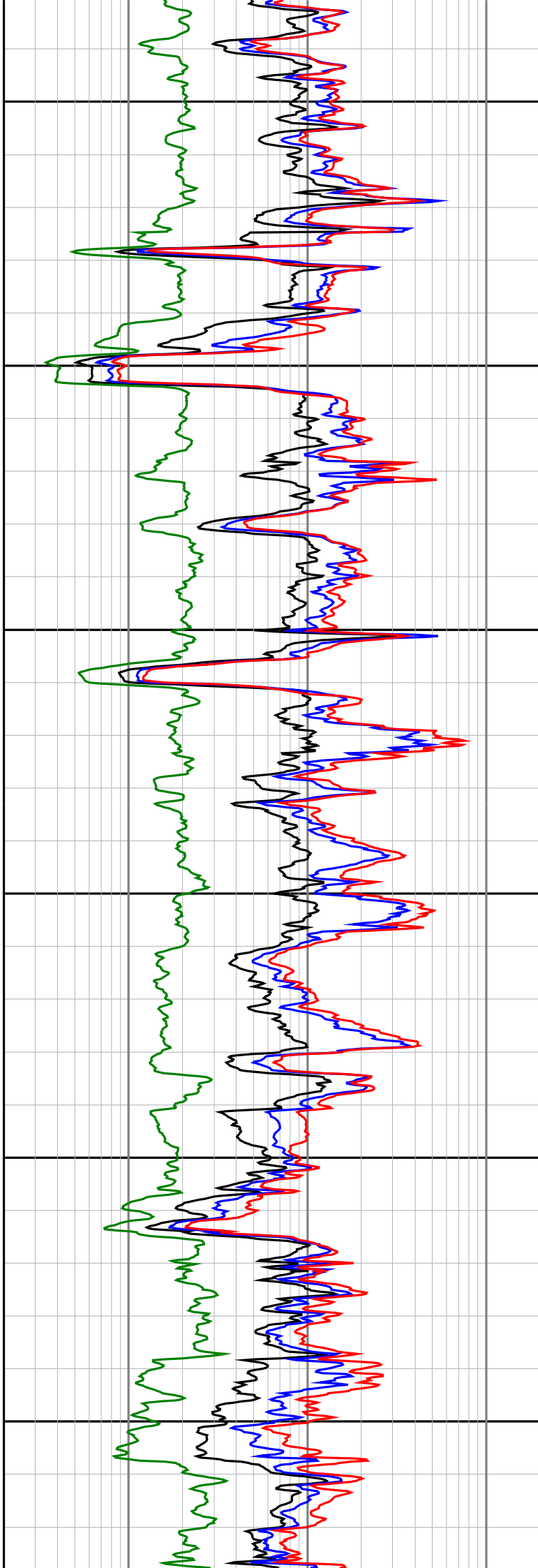
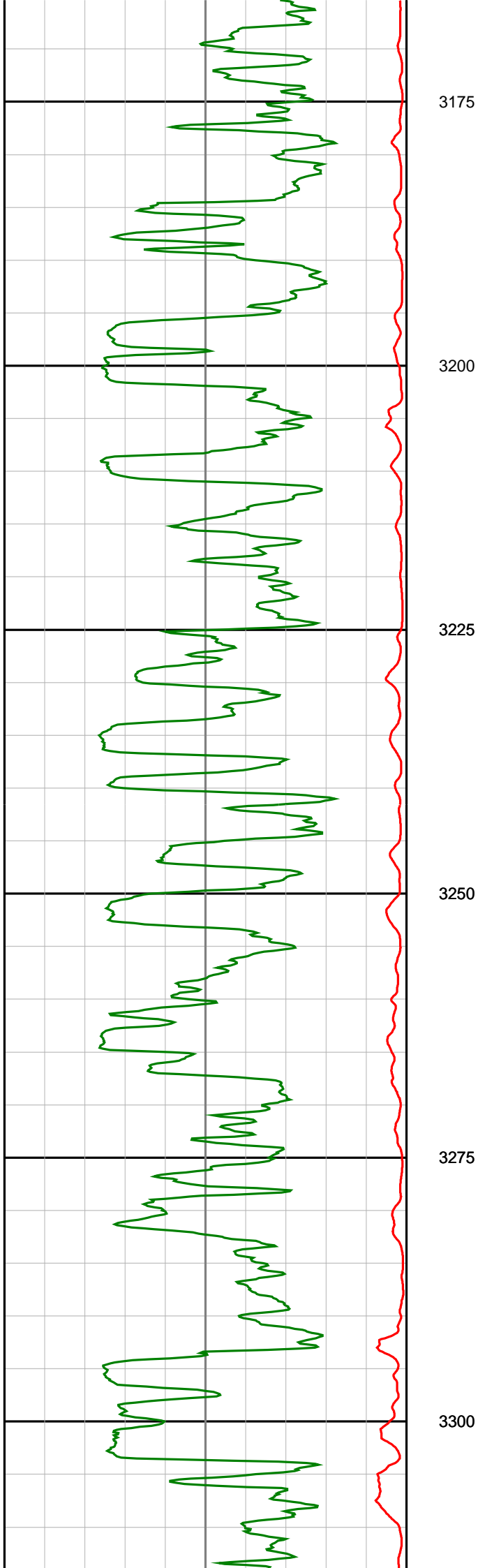


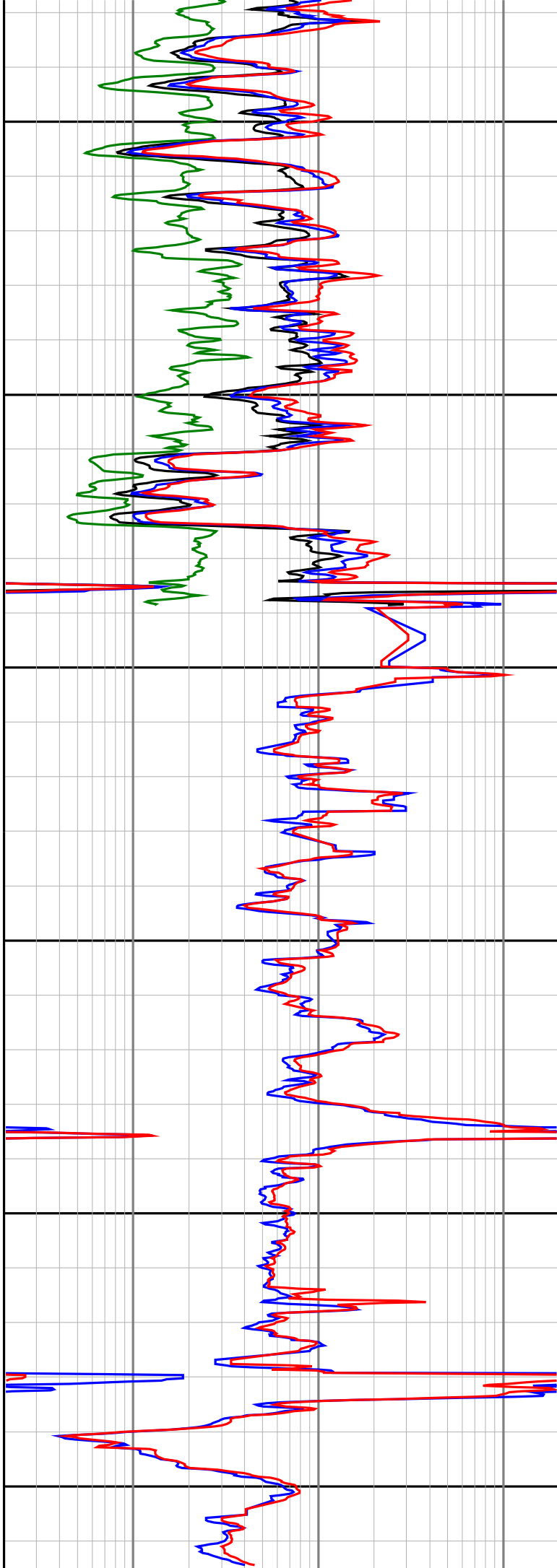
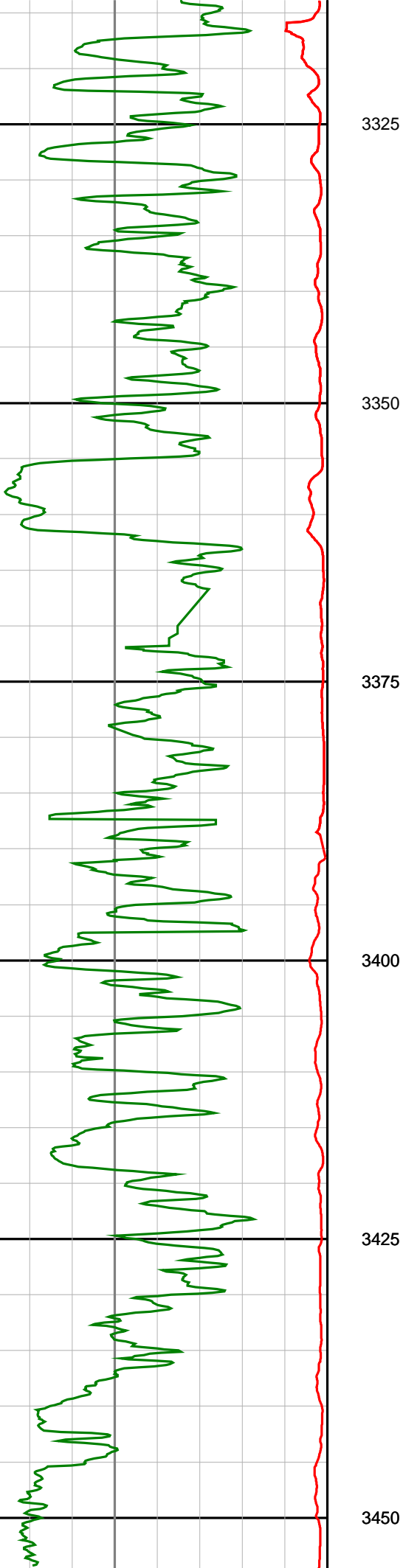












	2475	
<p style="text-align: center;">Gamma Ray (SGRC) api</p> <p>0 200</p>	<p style="text-align: center;">Depth MD 1:500</p>	<p style="text-align: center;">Ext Shallow Phase Res (SEXP) ohmm</p> <p>0.2 200</p>
<p style="text-align: center;">Rate Of Penetration (SROP) m/hr</p> <p>500 0</p>		<p style="text-align: center;">Shallow Phase Res (SESP) ohmm</p> <p>0.2 200</p>
		<p style="text-align: center;">Medium Phase Res (SEMP) ohmm</p> <p>0.2 200</p>
		<p style="text-align: center;">Deep Phase Res (SEDP) ohmm</p> <p>0.2 200</p>